



## Handling System for Hood type Pre-wash Table with Bowl Right to Left, 1200mm

ITEM # \_\_\_\_\_

MODEL # \_\_\_\_\_

NAME # \_\_\_\_\_

SIS # \_\_\_\_\_

AIA # \_\_\_\_\_



865308 (BHHPTB12R)

Prewash table with  
500x400mm bowl for hood  
type, r>l, 1200mm

### Short Form Specification

Item No. \_\_\_\_\_

For hood type dishwashers. Constructed in 304 AISI stainless steel. Backsplash mm300h. N. 2 square 40x40mm tubular legs on height-adjustable feet. Bowl size mm500x400x300h with overflow pipe, drain hole and plastic syphon. Basket direction: from right to left.

### Main Features

- Supplied knocked-down and easy to assemble.
- Designed for 500x500 mm dishwashing racks.
- Plain undershelves and pre-rinse units available as optional accessories.

### Construction

- Stainless steel feet 50 mm adjustable in height to ensure that tables drain back into the dishwasher.
- Included splashback to prevent water spatter.
- Deep anti-drip profiles completely folded with lower edge for safe and easy cleaning.
- All surfaces smooth with polished finish.
- 40x40 mm square tubular legs in AISI 304 stainless steel.
- 700x500x300mm bowl available upon request.
- Constructed entirely in 304 AISI stainless steel.
- To be secured to the dishwasher and fitted with one pair of legs at the other end.

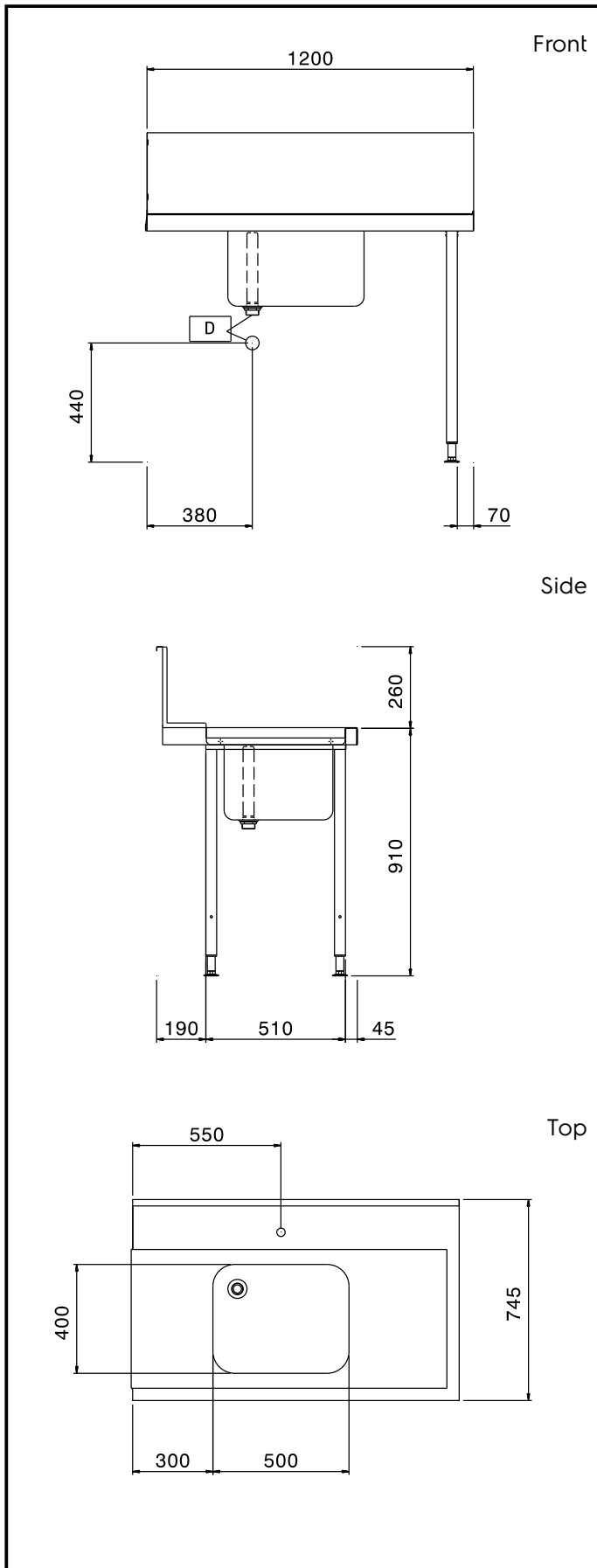
### Optional Accessories

- Prewash spray unit, single hole PNC 855315
- Undershef for dishwasher PNC 865352   
table, 1200mm
- Floor fastening kit for 2 square PNC 865386   
legs
- Single plastic drain syphon 2 PNC 895313   
" for sinks

APPROVAL: \_\_\_\_\_



Experience the Excellence  
[www.electroluxprofessional.com](http://www.electroluxprofessional.com)  
[professional@electrolux.com](mailto:professional@electrolux.com)



### Key Information:

|                                       |              |
|---------------------------------------|--------------|
| <b>External dimensions, Width:</b>    |              |
| 865308 (BHHPTB12R)                    | 1200 mm      |
| <b>External dimensions, Depth:</b>    | 745 mm       |
| <b>External dimensions, Height:</b>   | 1170 mm      |
| <b>Net weight:</b>                    | 8 kg         |
| <b>Splashback Dimensions, Height:</b> | 300 mm       |
| <b>Basin dimensions:</b>              | 500x400x300h |